

An aerial photograph of a town, likely in a developing region, with numerous small, colorful buildings and a prominent hill in the background. A large, semi-transparent rectangular box is overlaid on the center of the image, containing the title and event information.

# IS ENERGY THE SOLUTION?

DECEMBER 3RD 2019  
KIVALLIQ ENERGY FORUM



An aerial photograph of a sprawling informal settlement, likely a shantytown, built on a hillside. The houses are small, colorful, and densely packed. In the foreground, there is a small, isolated white building with a red door and a blue roof, possibly a church or a community center. The surrounding area is mostly flat and dusty, with some sparse vegetation. The text "IT DID NOT START WITH ENERGY" is overlaid in the center of the image.

IT DID NOT START WITH ENERGY



# OPTIONS

- ~~HIGHER USER FEES~~
- ~~REDUCE STAFF~~
- ~~REDUCE PROGRAMS~~
- ~~INCREASE REVENUE~~
- UTILITIES



















# SOLUTIONS

- ☑ High Efficiency Boilers
- ☑ LED Lighting
- ☑ Renewable Energy Offset.







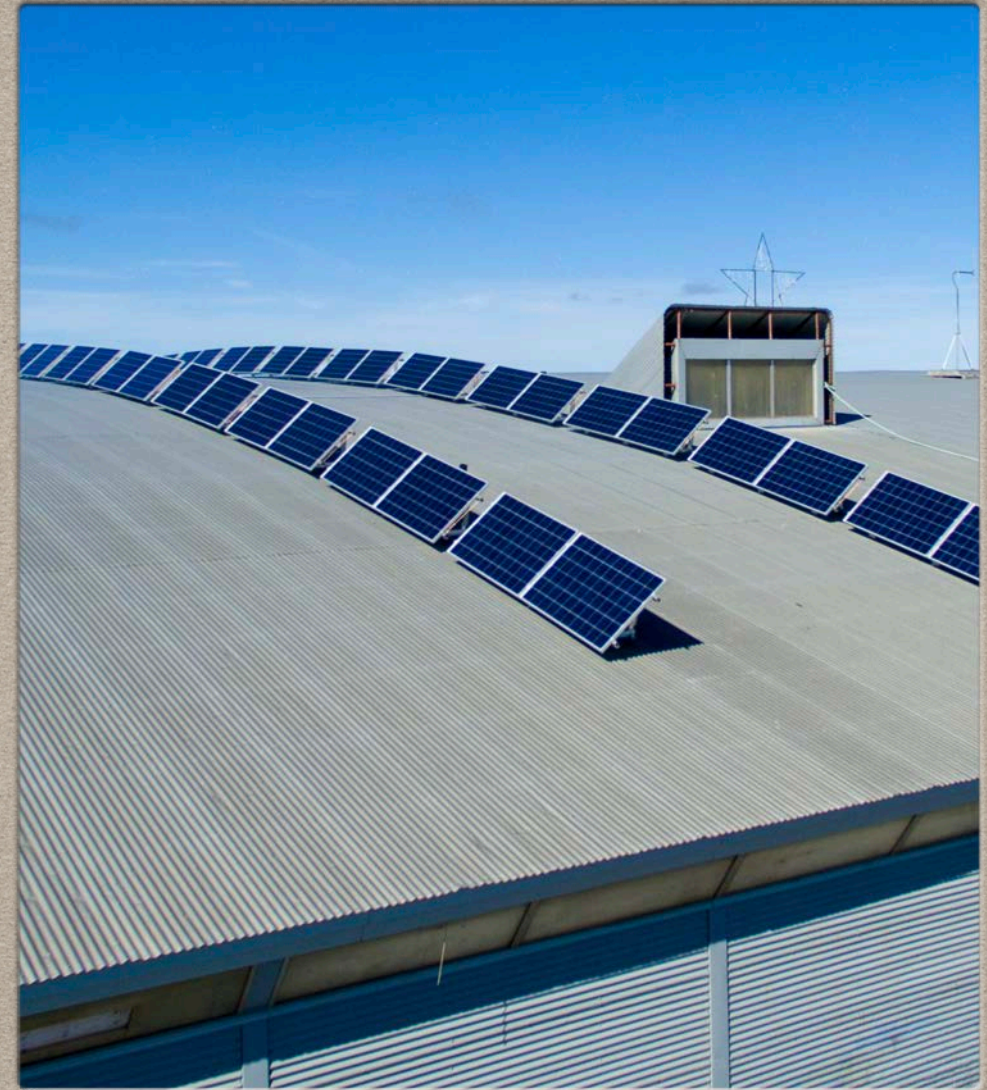


# CHALLENGES

- Finding Multiple Funders with similar mandates / Single Year Funding
- Available Community Equipment
- Inuit Employment
- Utility/Customer Relations
- New Utility Policy Rolled Out Mid Way Into Project.
- Logistics









# 60KW PV RECREATION COMPLEX





# CHANGES NEEDED

- Involve Communities in Utility Policy Creation
- Community Project Ownership
- Economic Diversification
- Public Housing Efficiency & Conservation Education
- Change to Subsidy Structure for Diesel Fuel
- Collaborative Planning





An aerial photograph of a town in Nunavut, Canada, showing a dense cluster of colorful buildings and houses. The town is situated in a flat, open landscape with some hills in the background. The image is slightly faded and has a soft, painterly quality.

# THANK YOU

Bill Williams  
Nunavut Economic Developers Association  
[exdir@nunavuteda.com](mailto:exdir@nunavuteda.com)  
867.979.4620